

The Pat Giles Counselling Service for Women was established to provide assistance to women in the community experiencing domestic violence. Domestic violence happens when one person in a relationship wants to have power and control over the other person.

This can be done in many ways.

- hitting, punching, slapping or pushing you,
- threatening to hurt you, friends, family members or pets,
- making you have sex when you don't want to,
- making you think you are crazy,
- putting you down all the time, making you feel stupid or worthless,
- putting you down in front of other people,
- not letting you go out or see family or friends,
- not letting you have any money for food, clothes and other basic needs,
- putting you down because of your culture or religious beliefs.

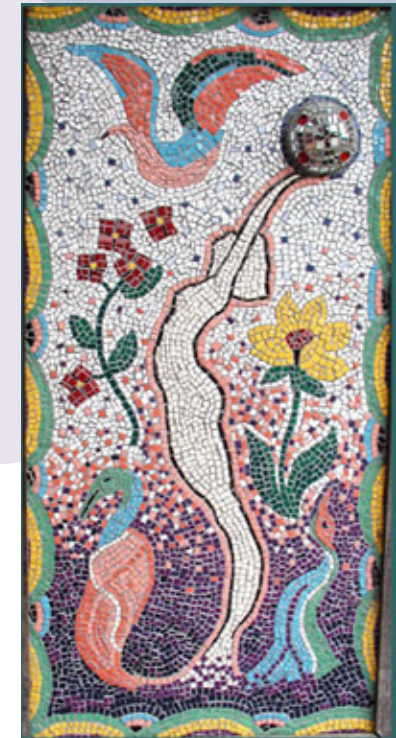
THIS IS DOMESTIC VIOLENCE!

USEFUL NUMBERS

- CRISIS CARE (08) 9223 1111
- POLICE -CRISIS 000
TO REPORT AN INCIDENT 131 444
- PATRICIA GILES CENTRE (08) 6444 7682
- POLICE DV LIAISON (08) 9400 0943
OFFICER (JOONDALUP)
- JOONDALUP FAMILY (08) 9400 0700
COURT
- DOMESTIC VIOLENCE (08) 9261 6254
LEGAL AID UNIT
- PATRICIA GILES CENTRE (08) 6444 7684
CHILDREN'S COUNSELLING SERVICE
- DEPARTMENT FOR CHILD (08) 9301 3600
PROTECTION (JOONDALUP)
- SEXUAL ASSAULT (08) 9340 1828
RESOURCE CENTRE

The Pat Giles Counselling Service for Women is funded by the Department for Child Protection.

Counselling Service for Women



Ph: 9300 1022

www.patgilescentre.org.au

The Pat Giles Counselling Service for Women offers you

Counselling

We offer face to face counselling to women who are, or have been in situations of domestic violence. Counselling can be short term or on an ongoing basis. Telephone counselling is also available.

To see a counsellor simply phone and make an appointment to come into the centre.

If you have pre-school age children there is a child support service available to supervise them during your counselling session, just let the counsellor know if you wish to use this service when you are making your appointment.

Please note, counsellors cannot provide counselling inside private dwellings.

Fresh Start

Fresh Start - a handbook for women about abusive relationships (available in English, Spanish, Vietnamese and Thai).

Groups

The service conducts a range of groups during school terms.

They include self-esteem groups, children's groups and parenting groups. Courses are free and child care is available on site without charge.

For dates and times phone 9300 1022.

REFERRAL AND ADVOCACY

Monday to Friday, 9.00am – 4.00pm

Support is given to women who require assistance and written referrals to agencies such as Centrelink, Police, Legal Aid, Department for Child Protection, Department of Housing and Works, Warwick Child and Adolescent Clinic and other government and non-government agencies.

Assistance in seeking legal advice can be arranged through the Domestic Violence Legal Aid Unit.

Information

You can phone for information about what services may be able to assist you, to find out more about domestic violence or to talk about accommodation if you need to find somewhere safe to stay.

Outreach

An outreach service is provided to women and children who have stayed in a refuge and are living in the Cities of Wanneroo or Joondalup.

Services offered include ongoing emotional and practical support; advocacy when dealing with government agencies such as Centrelink, Homeswest, doctors; support at appointments if required; and information and referral to services in your area that are relevant to your circumstances.

Fees

All services provided by the Pat Giles Counselling Service are free.

Clients can however make donations to the Pat Giles Centre if they wish. Hours are Monday to Friday 9.00am-4.00pm.